



PRS.0042

CORKSEAL T24

Hydro-expansive rubber plug for tubular PVC formwork spacers

Customs Code

3926 9097

Packaging

- Small bag 100 unit

Application

- Hammer

Family
Proseal

Type
Hydro expansive rubber products

Product Lines

- Aqua
- Infratech

Functional Categories

- **Instantaneous stoppage of water infiltrations in buildings**
- **Waterproofing underground structures with hydro-expansive products**
- **Structural maintenance of dams, reservoirs, ducts and water ducts**
- **Construction of underground works in high performance waterproof concrete**

Components
Single-component

Appearance
Plastic plug

General description

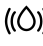
CORKSEAL T24 is a special sealing closure device for tubular formwork spacers, consisting of a rigid core made of polyamide plastic material and a corrugated cap in hydro-expansive rubber. The core of CORKSEAL T24 is provided with special circular lamellas that surround it and that, if properly inserted into the spacer, provide a high pressure mechanical seal, so that the sealing element is not removed from the seat where it is placed even in the presence of negative thrust. CORKSEAL T24's hydro-expansive cap is designed to ensure the hermetic sealing of the internal part of the tubular spacer.

Fields of application


Concrete subterranean construction by metal formwork, where the wall is in direct contact with the ground and where there is the presence of waterproofing layers external to the masonry itself: basements, tavernas, underground garages, underground rooms and basements, etc. CORKSEAL T24 is designed for tubular spacers of 24 mm inner diameter, normally used in the construction industry.

Basic features


 Diameter:
24 mm

 Hydroexpansive product:
+200 / +900 %

 Nonflammable

 Shelf-life:
24 months

 Suitable for contact with drinking water

 Available colours
Blue

Technical specifications

Alkali-resistant material

Non-toxic material

Odorless

Applicable on

Concrete, Tubular spacers for steel formworks



www.azichem.com

Updated: **23/03/2021**

General sales conditions and legal notices on

www.azichem.com/disclaimer

Instructions for use

The sealing protection CORKSEAL T24 should be used after the removal of metal formworks, thus only on spacers already "in work" and immersed in the concrete. The installation of the sealing protection to be executed by simply inserting the plug by hand, inside each empty spacer, as far as possible, to then complete the insertion using a light hammer until "full insertion".

Even though CORKSEAL T24 has been designed and tested to withstand pressures up to about 5 bar in negative thrust (i.e. from inside the masonry), it is advisable to apply the product in positive thrust, therefore, by inserting it from the external side of the masonry, after stripping and before backfilling.

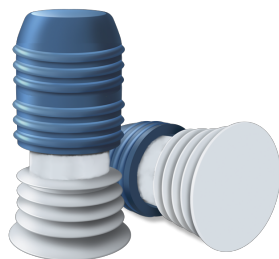
It is advisable to use the product in combination with non-"preformed" spacers (which often have changes in diameter depending on the model and which therefore might affect the hermetic sealing at high pressures of the protective sealing. It is recommended to use the spacers sold in rods to be cut to size directly on site .

The insertion of CORKSEAL T24 in spacers not assembled in the works (in the absence of external contrast) could cause the spacer itself to break.

In cases of expansion with very marked changes in volume (>500%), and in the absence of restrictive conditions, there may be some superficial lacerations; these phenomena do not compromise the features that protect the protective sealing and especially they do not occur under normal operating conditions, i.e. when the expansive phenomenon is in constrained conditions with reference to the usable volume (inside the spacer).

Storage and preservation

Store the product in its original packing, in a fresh and dry environment, avoiding frost and direct sunlight. Inadequate storage of the product may result in a loss of rheological performance. Protect from humidity.



Warnings, Precautions and Ecology

The general information, along with any instructions and recommendations for use of this product, including in this data sheet and eventually provided verbally or in writing, correspond to the present state of our scientific and practical knowledge.

Any technical and performance data reported is the result of laboratory tests conducted in a controlled environment and thus may be subject to modification in relation to the actual conditions of implementation.

Azichem Srl does not assume any liability arising from inadequate characteristics related to improper use of the product or connected to defects arising from factors or elements unrelated to the quality of the product, including improper storage.

Those wishing to utilise the product are required to determine prior to use whether or not the same is suitable for the intended use, assuming all consequent responsibility.

The technical and characteristic details contained in this data sheet shall be updated periodically. For consultation in real time, please visit the website: www.azichem.com. The date of revision is indicated in the space to the side. The current edition cancels out and replaces any previous version.

Please note that the user is required to read the latest Safety Data Sheet for this product, containing chemical-physical and toxicological data, risk phrases and other information regarding the safe transport, use and disposal of the product and its packaging. For consultation, please visit: www.azichem.com.

It is forbidden to dispose of the product and/or packaging in the environment.



www.azichem.com

Updated: **23/03/2021**
General sales conditions and legal notices on www.azichem.com/disclaimer

CORKSEAL T24 is produced/distributed by



Via Giovanni Gentile, 16/A - 46044 Goito (MN), Italy
info@azichem.com Tel. +39 0376.604185 /604365 Fax +39 0376 604398



www.azichem.com

Updated: **23/03/2021**
General sales conditions and legal
notices on
www.azichem.com/disclaimer

Page: **3/3**